

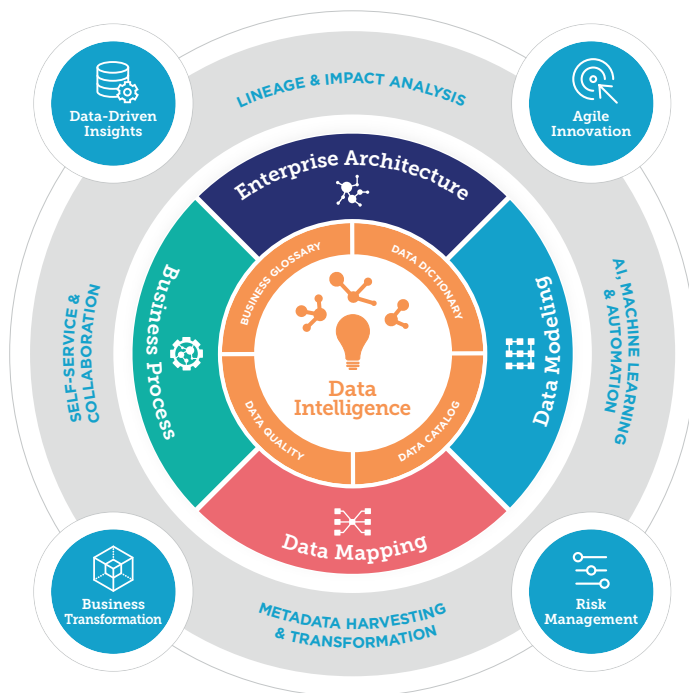
Get Smart with the erwin EDGE

Unleashing Potential and Value

erwin[®]
the data governance company

The erwin brand has been the gold standard in data modeling for more than 30 years. As a stand-alone company, we're focused on **data governance** as a strategic approach and underlying technology for operational excellence, competitive differentiation and risk mitigation. Through strategic acquisitions and significant investment in R&D, we've developed the only software platform with integrated enterprise **modeling, data cataloging and data literacy** capabilities to help customers discover, understand, govern and socialize their data assets to achieve the desired operational results while reducing data-related risks.

The **erwin EDGE** platform creates an **"enterprise data governance experience"** to give organizations visibility and control over their disparate architectures and all the supporting data. The broadest set of metadata connectors and automated data mapping, code generation and cataloging tools combine data management and data governance processes in an automated flow, with upstream and downstream data lineage, to reduce errors and increase the speed and quality of the data pipeline. Both IT and business stakeholders have role-based, self-service access to the information they need to collaborate in making strategic decisions. This **data intelligence** unlocks potential and value. So the hallmark of the intelligent enterprise is IT and business collaboration, where data governance is everyone's business because it drives actionable, data-driven insights for agile innovation, business transformation and risk management.



The **erwin EDGE** connects critical data and business architectures to accelerate the speed to meaningful insights that produce operational results while mitigating data-related risks.

Quick Facts

- Established in **March 2016**
- Owned by **Parallax Capital Partners**
- **Adam Famularo**, CEO
- **250+** employees
- Named an **IDC Innovator** in **2019**
- Member of the **2019 Forbes Technology Council**
- Deployments in **60+ countries**
- Acquired **AnalytiX DS** in **August 2018**
- Acquired **Casewise Ltd.** in **December 2016**
- Acquired **Corso Ltd.** in **September 2016**
- Headquartered in **Melville, N.Y.**, with offices worldwide
- R&D teams in **New York, the United Kingdom and India**

More information on the **erwin EDGE portfolio** and free trials at **erwin.com**.

erwin is the data governance company.